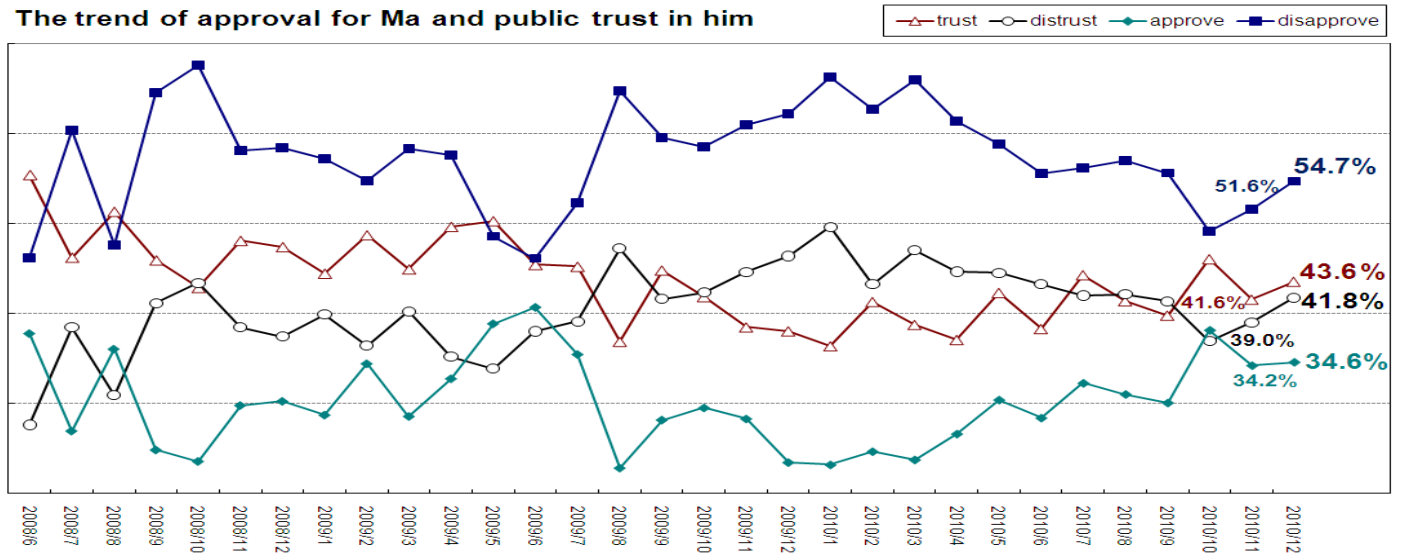


Survey on President Ma Ying-jeou's Approval Rating, Democratic Progressive Party's China policy and People's Views on the Unification-Independence Issue

A. President Ma Ying-jeou's performance: 43.6 percent of the interviewed trusted President Ma while 41.8 percent distrusted. 34.6 percent were content with his performance while 54.7 percent were not.

The poll indicated President Ma's approval rating was 34.6 percent and disapproval rating 54.7 percent. In comparison with last month, his approval rating edged up by 0.4 percentage point and his disapproval rating slipped 3.1 percentage points. 43.6 percent of the polled had trust in President Ma but 41.8 percent had distrust. Compared with last month, the level of public trust in Ma went up by 2 percentage points while the level of public distrust in Ma rose 2.8 percentage points. Generally speaking, there is slight increase in President Ma's approval and disapproval rating and the public trust and distrust rating. Regardless of the more negative evaluations, the figures are within the margin of the sampling error and show people's stable evaluations on Ma's performance.

The trend of approval for Ma and public trust in him



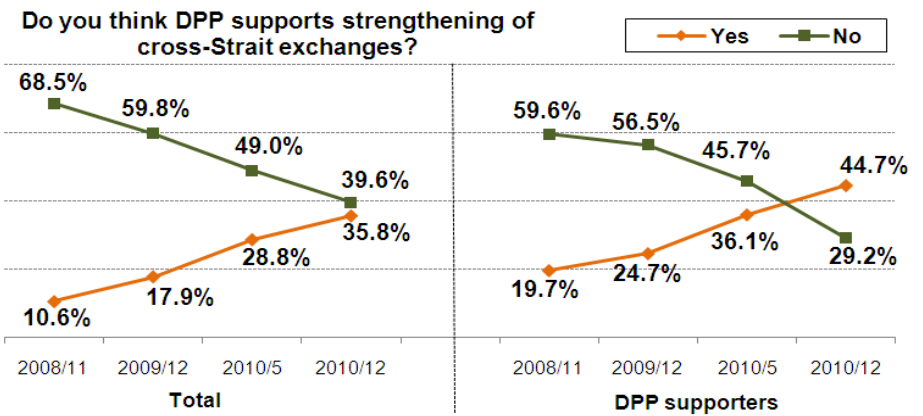
B. Evaluation on KMT lawmakers' performance: 24.6 percent of people are satisfied while 58 percent are not.

KMT controls nearly seventy percent of seats and shares the dominating power in the Legislative Yuan. The poll found 58 percent of the respondents were not satisfied with the overall performance of the KMT legislators, much higher than the approval rating of 24.6 percent. Compared with the previous month, their approval rating dropped 1.8 percentage points and disapproval rating soared 4.9 percentage points.

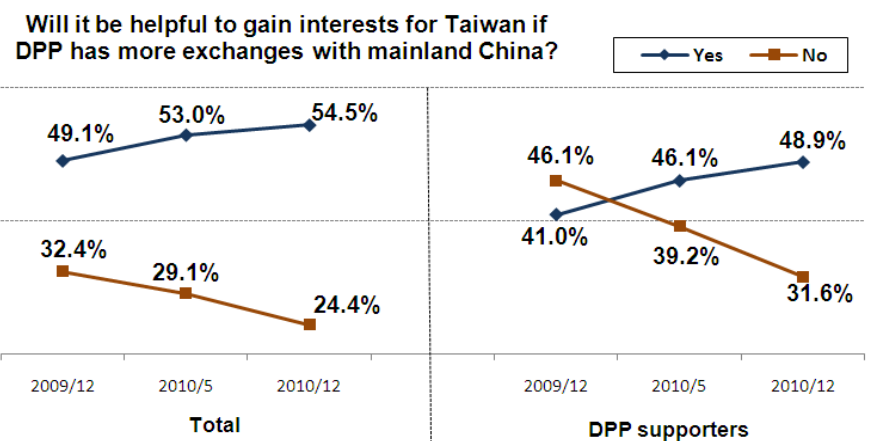
C. People's views on DPP's attitude toward enhancement of cross-Strait exchanges have changed and become divided. 54.5 percent said the exchanges between DPP and mainland China would advance Taiwan's interests. 53.7 percent said DPP should adjust its China policy and move toward openness.

The poll indicated that 39.6 percent of the respondents did not think DPP was supportive of strengthening of cross-Strait exchanges (people who said DPP did not support the exchanges at all accounted for 23.3 percent and those who said the party was somewhat unsupportive accounted

for 16.3 percent). 35.8 percent thought DPP backed strengthening of cross-Strait exchanges. (People who thought DPP was fully supportive of the exchanges accounted for 10 percent and somewhat supportive 25.8 percent). The results showed people used to have negative views but now turned divided over this issue in the past two years. As for the DPP supporters, 44.7 percent said the party really supported reinforcement of cross-Strait exchanges while 29.2 percent said otherwise. It is the first time over the past two years that the supporters surpassed the opposition with the margin of 15.5 percentage points. In general, the survey showed both the DPP supporters and the general public thought DPP was becoming supportive of strengthening of cross-Strait exchanges and a consensus on necessity of cross-Strait relations was gradually forged by the blue and green political party.

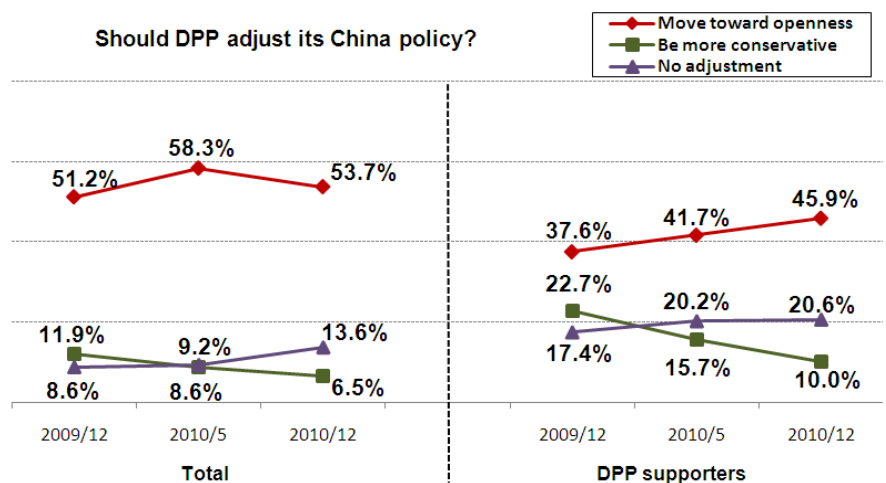


54.5 percent of people said if DPP had more exchanges with mainland China it would help gain more interests for Taiwan (with 15.9 percent considering it very helpful and 38.6 percent somewhat helpful) but 24.4 said unhelpful. Compared with the previous surveys, the general public has



been encouraging DPP's engagement with mainland China and expecting it to be more active for Taiwan's overall interests. 48.9 percent of the DPP supporters said it would benefit Taiwan if DPP strengthened exchanges with China while 31.6 percent held the opposite views, which showed DPP supporters and the public were getting a consistent view.

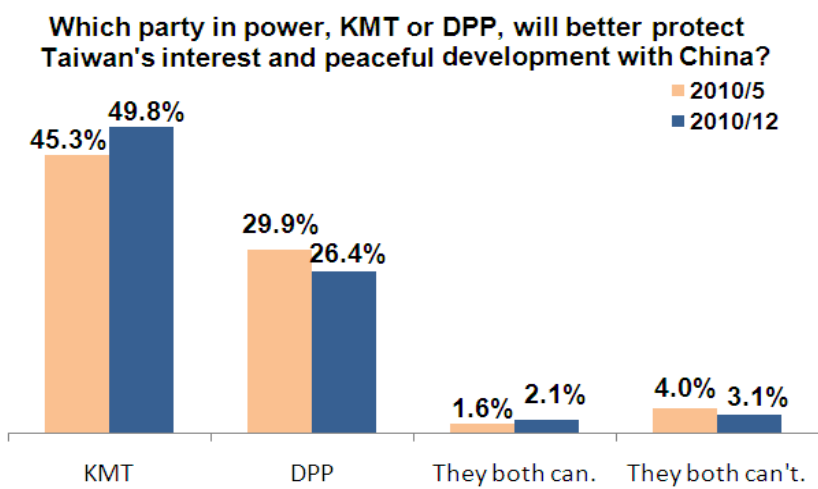
In addition, 53.7 percent of people said DPP should adjust its China policy and move toward openness and 6.5 percent said it should move toward the opposite direction. 13.6 percent said there was no need for adjustment with 26.1 percent failing to give explicit response. Compared with the previous polls, more than half of



people thought DPP should not only have intensive exchanges with China but move toward openness for its China policy and have related acts. The survey indicated aside from the KMT-CCP forum, most people hoped to see a balance among KMT, DDP and CCP across the Taiwan Strait for Taiwan society and cross-Strait stability. 45.9 percent of DPP supporters also thought the party should be open to China with 10 percent preferring conservative attitude and 20.6 percent sticking to the current stance. There is an increase in the ratio in favoring an open-door policy toward China among the DPP supporters over the past year.

D. 49.8 percent of the polled said KMT would be much more capable of protecting both Taiwan's interests and peace across the Taiwan Strait than DPP while 26.4 percent held the opposite views.

KMT succeeds DPP as the ruling party in 2008. According to the poll, 49.8 percent of people thought KMT would be more capable of safeguarding Taiwan's interests and peaceful development across the Strait than DPP (slightly higher than President Ma's public trust rating of 43.6 percent and KMT's 41.5 percent) while 26.4 percent held the opposite views (obviously much lowered than DPP Chairperson Tsai Ing-wen's trust rating of 47.2 percent and DPP's 37.1 percent). 2.1 percent said both KMT and DPP were competent of dealing with the issues while 3.1 percent said neither KMT nor DPP was capable and 18.6 percent did not give explicit response. Compared with the poll conducted in May this year, people who said KMT would do a better job



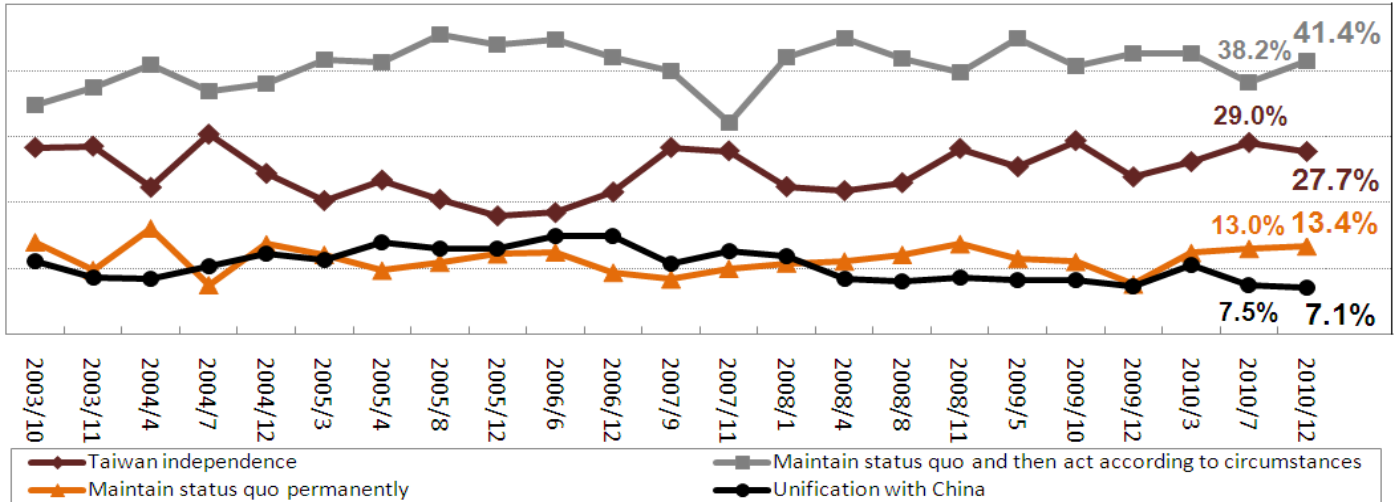
protecting Taiwan's interests and peace across the Strait increased by 4.5 percentage while people who held the positive view on DPP decreased by 3.5 percentage points. Although most of people expect DPP to be more active for cross-Strait affairs they still are dubious over DPP's stereotype. That explains not only DPP Chairperson Tsai Ing-wen's intention to establish a think tank for planning of the "Ten-year Platform" but her bid for the presidential election in 2012.

E. People's stance on unification-independence issue: 54.8 percent preferred to maintain the status quo while 27.7 percent favored Taiwan independence and 7.1 percent unification with China. People's view on eventual unification-independence issue: 49 percent supported Taiwan independence eventually while 34.2 percent said otherwise. 17.4 percent backed eventual unification across the Strait but 69.4 percent voiced opposition.

GVSRC has been tracking Taiwanese people's stance on unification-independence issue. A poll with the same questionnaire is conducted for comparison after the five mayoral elections conclude and before the sixth round of negotiations between the Straits Exchange Foundation (SEF) and the Association for Relations across the Taiwan Strait (ARATS) begin. The survey found that 16.4 percent of the polled supported Taiwan declares independence as soon as possible while 11.3 percent said Taiwan should maintain the status quo before moving toward independence. (People favoring radical and moderate independence accounted for 27.7 percent.) 41.4 percent

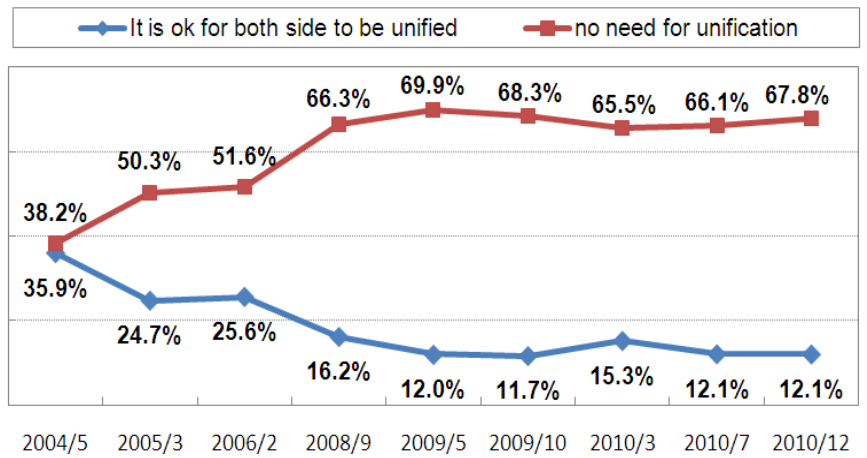
preferred to maintain the status quo and then act according to circumstances. 13.4 percent were supportive of permanent status quo. (People opting for status quo accounted for 54.8 percent.) 4.6 percent chose to maintain the status quo first and then be unified with China while 2.5 percent said Taiwan should be unified with China as soon as possible. (People who preferred moderate and radical unification accounted for 7.1 percent.) 10.4 percent of people did not give explicit response.

Taiwanese people's stance on unification-independence issue



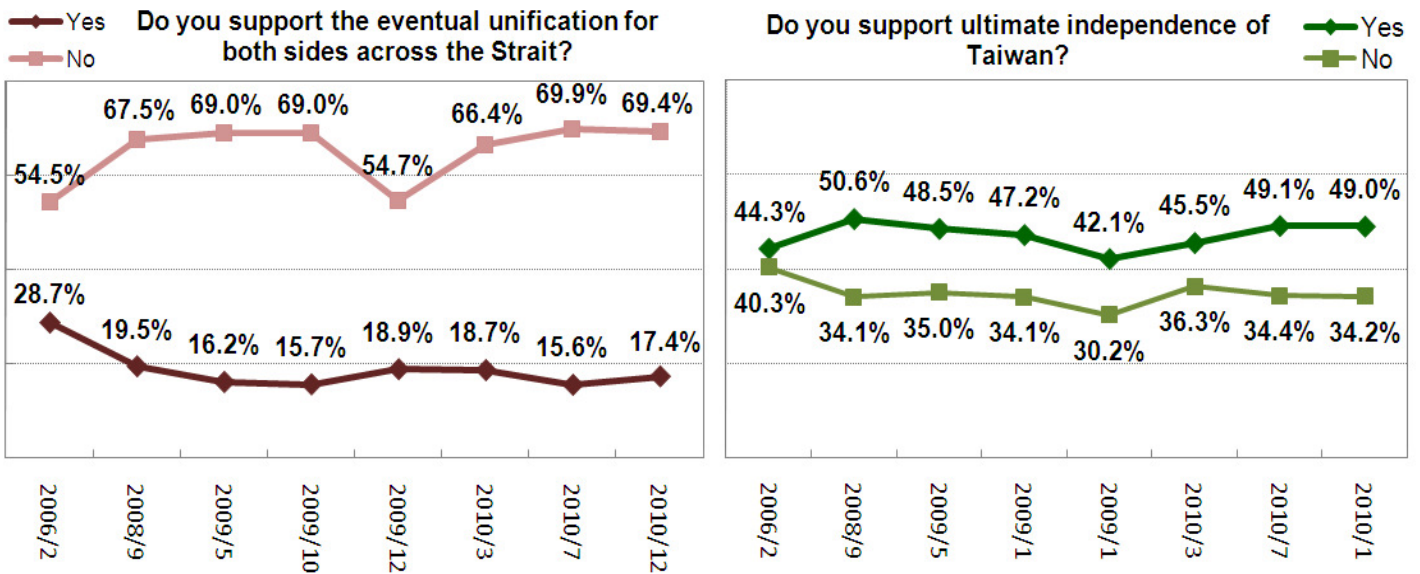
Note 1: "Taiwan independence" includes radical and moderate independence and "Unification with China" includes radical and moderate unification.
 Note 2: Polls dated from 2003 to 2005 were held by ERA Survey Center

The survey with standard questionnaire on unification-independence issue found that if both sides across the Strait have similar economic, political and social conditions, 67.8 percent of people said unification was unnecessary while 12.1 percent said it would facilitate unification. 20.2 percent did not give clear response. The result coincides with the ones of the previous surveys and shows a high level of consensus still exists among people over this issue since President Ma took office.



Note : The May 2004, March 2005, and February 2006 surveys were conducted by the ERA Survey Center.

When asked about the eventual unification with China, after the five mayoral elections conclude and before the sixth round of SEF-ARATS meeting begins, 17.4 percent were supportive while 69.4 percent voiced opposition. The result has little changes compared with the ones held in June when ECFA was just signed and when President Ma just came to power. 27.2 percent of the pan-blue supporters were in favor of being unified with China and 62 percent were opposed to it. Even over sixty percent of people whose family was from mainland China did not support this idea with only 22.8 percent voicing approval of being unified with China. The survey suggested there is a strong consensus in Taiwan on issues pertaining to unification with China.



Note: Poll dated February 2006 was conducted by the ERA Survey Center.

However, when asked whether Taiwan should declare independence and become a new country eventually, 49 percent of people were supportive of it while 34.2 percent said otherwise. There are no obvious changes on this issue since President Ma took office. 30.9 percent of people in favor of the pan-blue alliance backed the proposal but 58.1 percent were against it. 78.7 percent of the pan-green supporters supported the idea and 13.5 percent were opposed to it. Compared with the previous polls, people are still divided over whether Taiwan should move toward independence and it has become a tug of war between people holding the opposite stance.

This survey was conducted by GVSRC from 6.20 p.m. to 10.00 p.m. from December 13 to 15, 2010. It was conducted with random-digit-dial sampling and computer-assisted telephone interviewing methods. 1008 Taiwanese people who are 20 or older completed the interview. One can say with 95% confidence level that the margin of error is $\pm 3.1\%$. Gender, living areas, ages, and educational level of the interviewees have undergone weighting procedure and test of the sample's representativeness in the survey results.